

# PM

Reviewed 2026-02-26

## Welcome!

**Gävle Skidkamrater and the Swedish Federation of Sleddog Sport warmly welcome you to the Swedish Championship Sled Sprint, Middistance, Skijoring 2dog and the national championships in Relay sled, in Gävle, during the period 6-8 March.**

**The competition is also part of the World Cup.  
And is open for all.**

## *Racing information*

**Note!! This PM will be updated continuously**

### USEFUL LINKS:

There may be changes in the competitions, so check the website regularly!  
Link to the Race: [www.skidkamraterna.se](http://www.skidkamraterna.se)

### PARKING:

Only competitors and officials/staff will have access to the parking lots within the competition area.  
The parking /stakeout will be open from Thursday 5 of March.  
Parking of motorhomes/RV's is possible, however, without electricity

### DIRECTIONS:

**From the north:** Take off the E4 at the Axmartavlan or Hagsta (interchange 201) and follow road 583 (the Virgin Coast Road) south. Turn at the sign Lindbacka/Skidstavallen (about 2 km after the exit to Hille). Follow signs Skidstavallen/Testeboskogens Nature Reserve.

**From the south:** Take the E4 at the Gävle Norra (interchange 200), follow the signs to Trödje (road 583). Turn at the sign Lindbacka/Skidstavallen. Follow signs Skidstavallen/Testeboskogens Nature Reserve.

**Coordinates WGS 84:** 60° 42'34,1"N 17°11'6,1"E

<https://maps.app.goo.gl/yMLMacor9y4TA2Xs7>



## WALK THE DOGS BEFORE!

Remember to walk the dogs before you get to the arena! Picks up after dogs and throws in designated plastic bags. The walk round will be marked.

## DOGS AROUND THE ARENA:

It is **NOT** allowed to have loose dogs within the competition area or along the exercise tracks and the nature reserve around the arena, according to municipal regulations. Please respect this!!

## RULES AND JUDGES:

**Racemarshal:** Owe Johnson

**Judge:** Anders Wallin

IFSS race rules with the compliment of Swedish national rules.

The rules can be found on the Swedish Sled Dog Sports Association's website:

<http://www.draghundsport.se/dokumentarkiv/default.aspx>

## HELMET:

Everyone competing in a sled-class has to wear a helmet during the race, this is for safety reasons.

## GROUPE DIVISION OF DOGS:

A- All dogs

B- All registered dogs except pointing dogs and dogs in C-group

C- Siberian Husky and Dobermann



## REGISTRATION:

Through <https://draghundsport.se/medlemsidor/signup/default.aspx>, or by: Tävling SM Släde 2026 Sprint och Medeldistans, 2026-03-06 ([draghundsport.se](https://draghundsport.se)) and for skijourning-classes Tävling SM Lina Lång och RM Lina 2-spänn 2026, 2026-03-07 ([draghundsport.se](https://draghundsport.se)) if you already have an account.

For the relay the registration is through mail to: [draghund@skidkamraterna.se](mailto:draghund@skidkamraterna.se)

Payment of fee to Gävle SK, IBAN: SE44 6000 0000 0003 6721 5268 SWIFT:HANDSESS. In the payment message, write name and class.

Last registration and payment day is 1/3. No registered payment means no starting slot.

**Registration fees:** Seniorsters 750 SEK Seniors skijoring 350 SEK, Junior 550 SEK. Relay teams: 800 SEK

## DID-NUMBER:

If you have a valid DID-Number and you are not a Swedish resident, please send it together with name to: [sdsf@draghundsport.se](mailto:sdsf@draghundsport.se) before 1/3/2. **NOTE** there is NQ requirement to have a DID-number to be able to race.

## PROTESTS:

Protests must be submitted orally directly at the finish line and in writing to the secretariat no later than 1 hour after the finish.

## CHANGING ROOMS, SERVING, ETC.:

See arena map.

## ACCOMODATIONS:

For accommodation, [www.skidkamraterna.se](https://www.skidkamraterna.se) or contact Visit Gävle <https://www.visitgavle.se>  
It is also possible to stay at the stakeout area if you have an RV or a trailer.

## QUESTIONS:

Petter Hillborg, tel. +4670-173 34 41, [draghund@skidkamraterna.se](mailto:draghund@skidkamraterna.se)



## RACE OFFICE:

Number bibs and timing chip are picked up there (the same number bib is used all days). **Note that the number bibs are picked up by every musher by them self.**

Race office will be open Thursday evening – Sunday. Opening hours: see program Remember to fill out the chip list and have vaccination certificate at hand! Competitors with dogs that start in NB (or purebreds in group b and c) must present a registration certificate. An unreturned number bib will be charged to the competitor's club with 1,500 SEK.

## MUSHERS MEETING:

The mushers meeting will be held at least 1 hour before the first start on Friday, Saturday and Sunday in front of the trail map on the arena. See "Program"

**THE MUSHERSMETING HAS MANDATORY PRESENS!!!! ( you can also be represented by someone ells)**

## VACCINATIONS:

Dogs from other countries participating in races in Sweden must be brought to Sweden in accordance with the regulations from the Swedish Board of Agriculture

<https://djur.jordbruksverket.se/swedishboardofagriculture/engelskasidor/animals/import.4.6621c2fb1231eb917e680002950.html>

Participating dogs and other dogs allowed in the area shall be vaccinated against distemper as follows:

- Dog younger than one(1) year: age at vaccination as a minimum ten(10) weeks of age.
- Dog older than one(1) year: vaccinated at a minimum age of ten(10) months and the elapsed time from previous vaccination less than four(4) years.
- First time vaccination shall be given at a minimum of fourteen(14) days prior to the race.

## BEFORE THE START:

The starting area is limited, therefore minimize the number of handlers. Entrance to the start area is via a walkway. The competitor is responsible for ensuring that the chip is attached. The same chip will be during the entire race. A chip that has not been returned will be charged to the competitor's club with SEK 2,000. Be in good time for the start. Starters or handlers and officials are the only ones allowed to stay within the start area!

## AT THE FINISHLINE:

Within the finish area, only competitors and officials are allowed. However, handlers are also allowed to stay in the finish area behind the designated line. Otherwise, it is not allowed to stay in the finish area.

## RACE TRAIL:

During the race, only competitors (wearing number bibs) and officials are allowed to be on the trail. Otherwise, it is forbidden to stay on the trail.



## DISTANCES:

-Sp2K	2,7 km (not a Wcp class)
-Sp2/Sp2J	5,5 km
-Sp4/Sp4J	8 km
-Sp6	12 km
-Sp8	14 km
-SpU	18 km
-MD6/MD6J	32 km
-MD12	32 km
-SM2 /SW2	12 km
-SML2/SWL2	24 km
-Relay sled 3x4,5 km (2sp+4sp+2sp/4sp)	
-MOTN 1	5,5 km (not an official class)
-MOTN 2	8 km (not an official class)

## FOOD:

Within the competition area, there will be food sales throughout the day, all competition days (breakfast/lunch/dinner), see [www.skidkamraterna.se](http://www.skidkamraterna.se)

## AWARD CEREMONY:

Sunday's award ceremony will be outdoors at the Start/Finish area about 1 hour after the last finish. The exact time will be announced by the announcer.

## STARTING LISTS:

Final start lists will be posted on the website the night before (with regard to possible withdrawals) Seeding will take place.

## RESULTS:

Will be posted at the race office and posted on SDSF's and GSK's website



## Timetable

**NB! The times will be adjusted based on the number of participants**

### Thursday 5/3

Kl. 17:00-20:00 Race office is open.

### Friday 6/3

Kl. 08:00-16:00 Race office is open.

Kl. 08:30 Mushers´meeting at the Trailmap.

Kl. 09:00 Opening ceremony at the startline.

Kl. 10:00 First start

### Saturday 7/3

Kl. 08:00-16:00 Race office is open.

Kl. 08:30 Mushers´meeting at the Trailmap.

Kl. 09:30 First start

**Award ceremony and closing ceremony about 1 hour after the last finish**

### Sunday 8/3

Kl. 08:00-16:00 Race office is open.

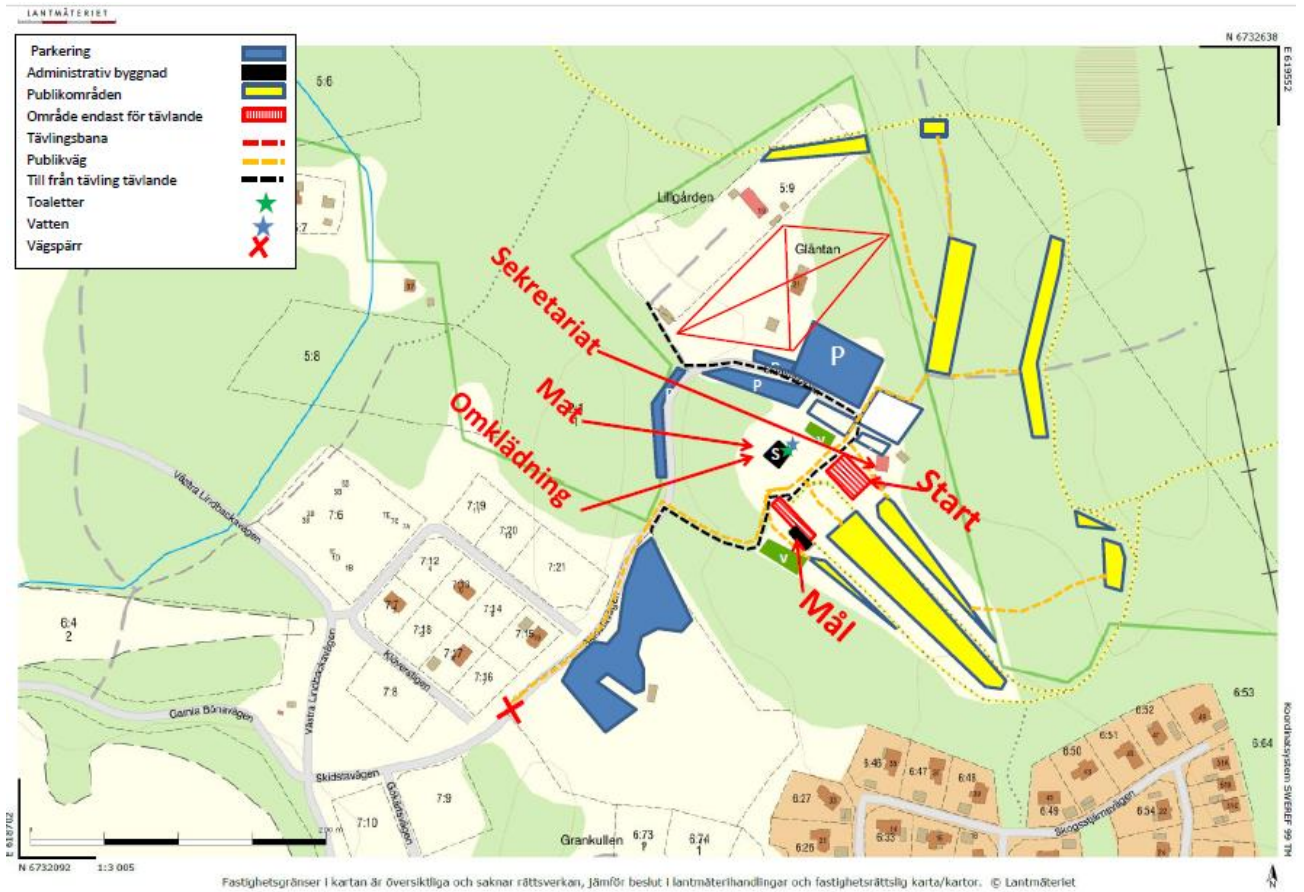
Kl. 08:30 Mushers´meeting at the Trailmap.

Kl. 09:30 First start

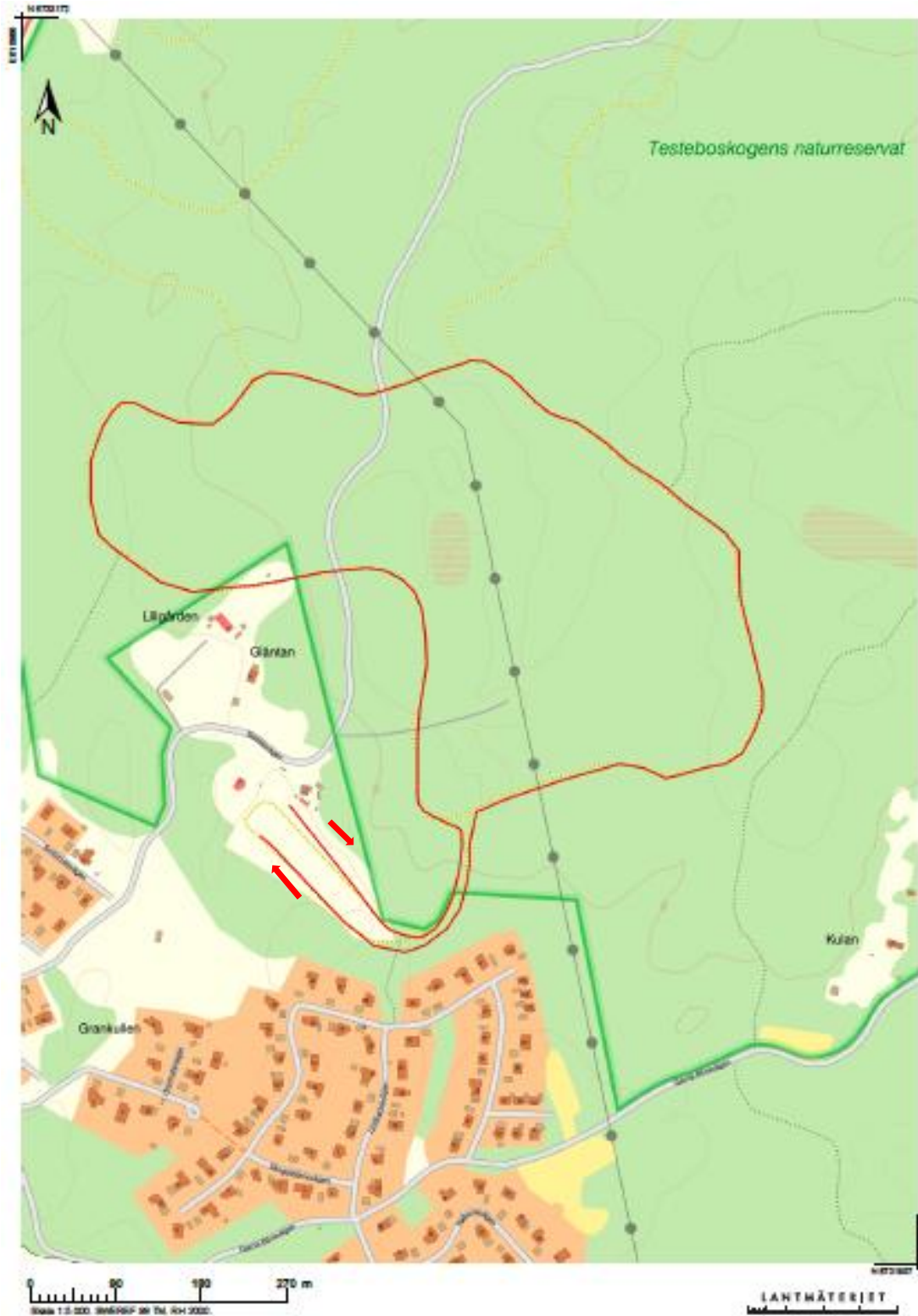
**Award ceremony and closing ceremony about 1 hour after the last finish**



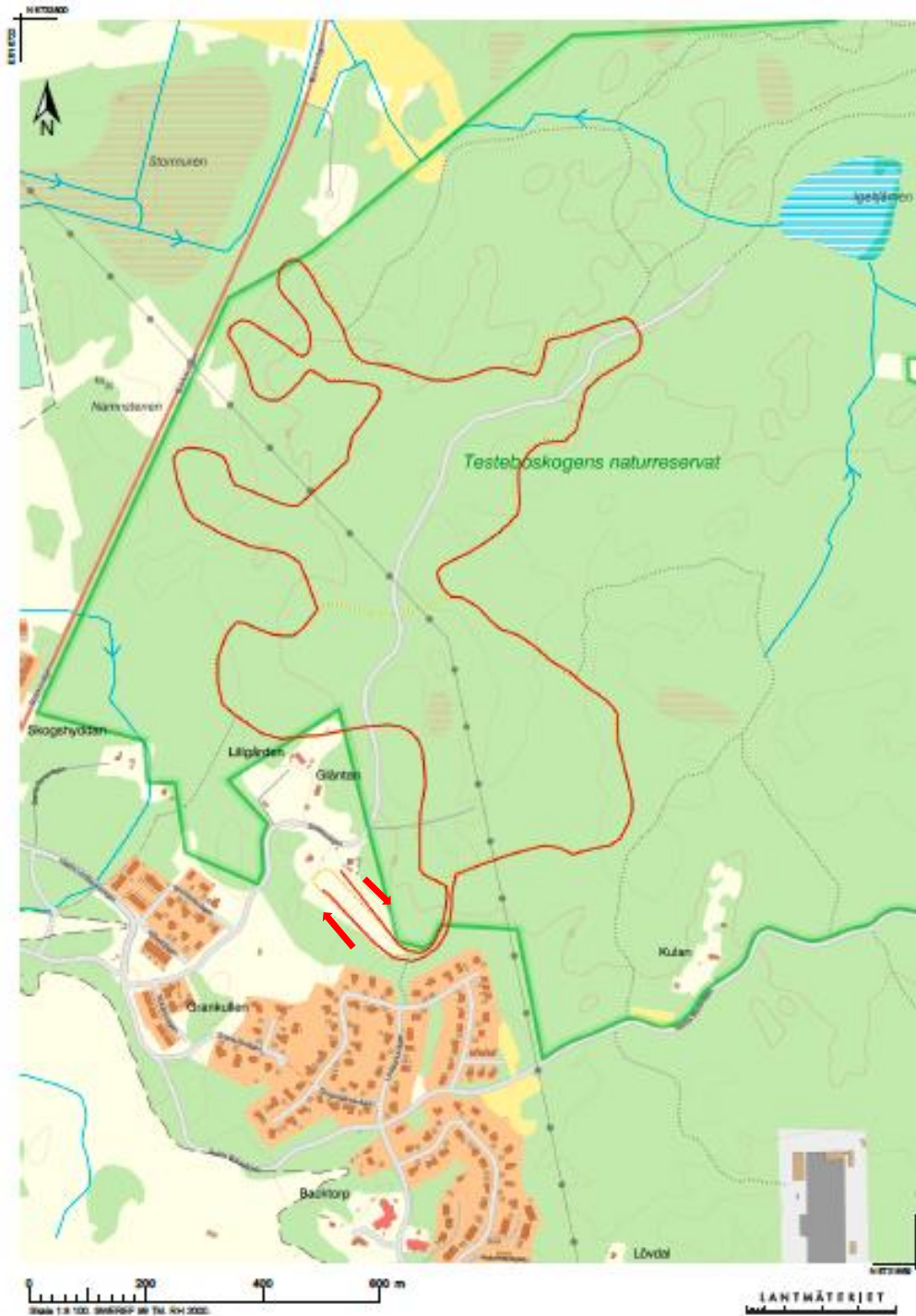
## Arena map



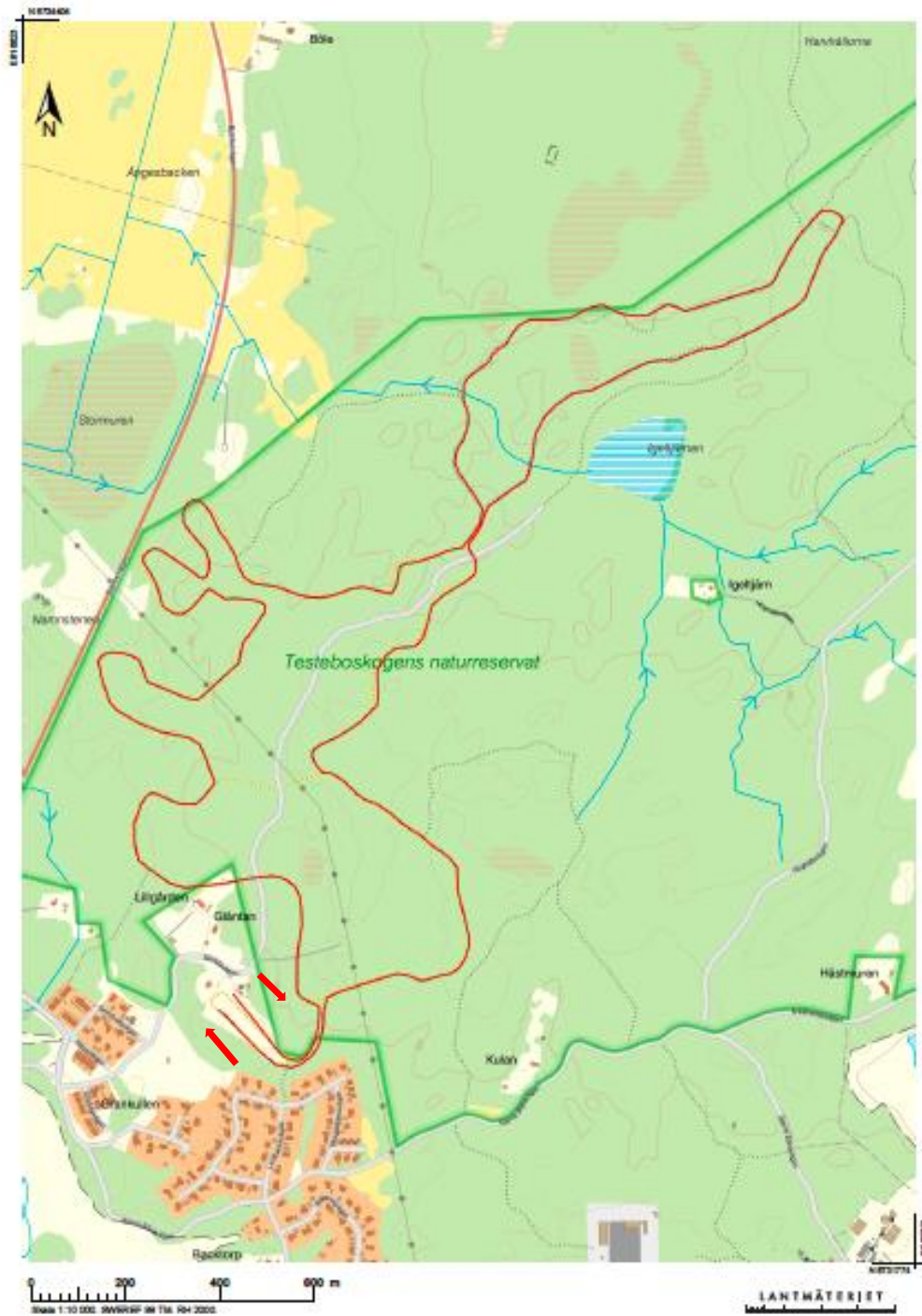
### Sp2K (2,7 km)



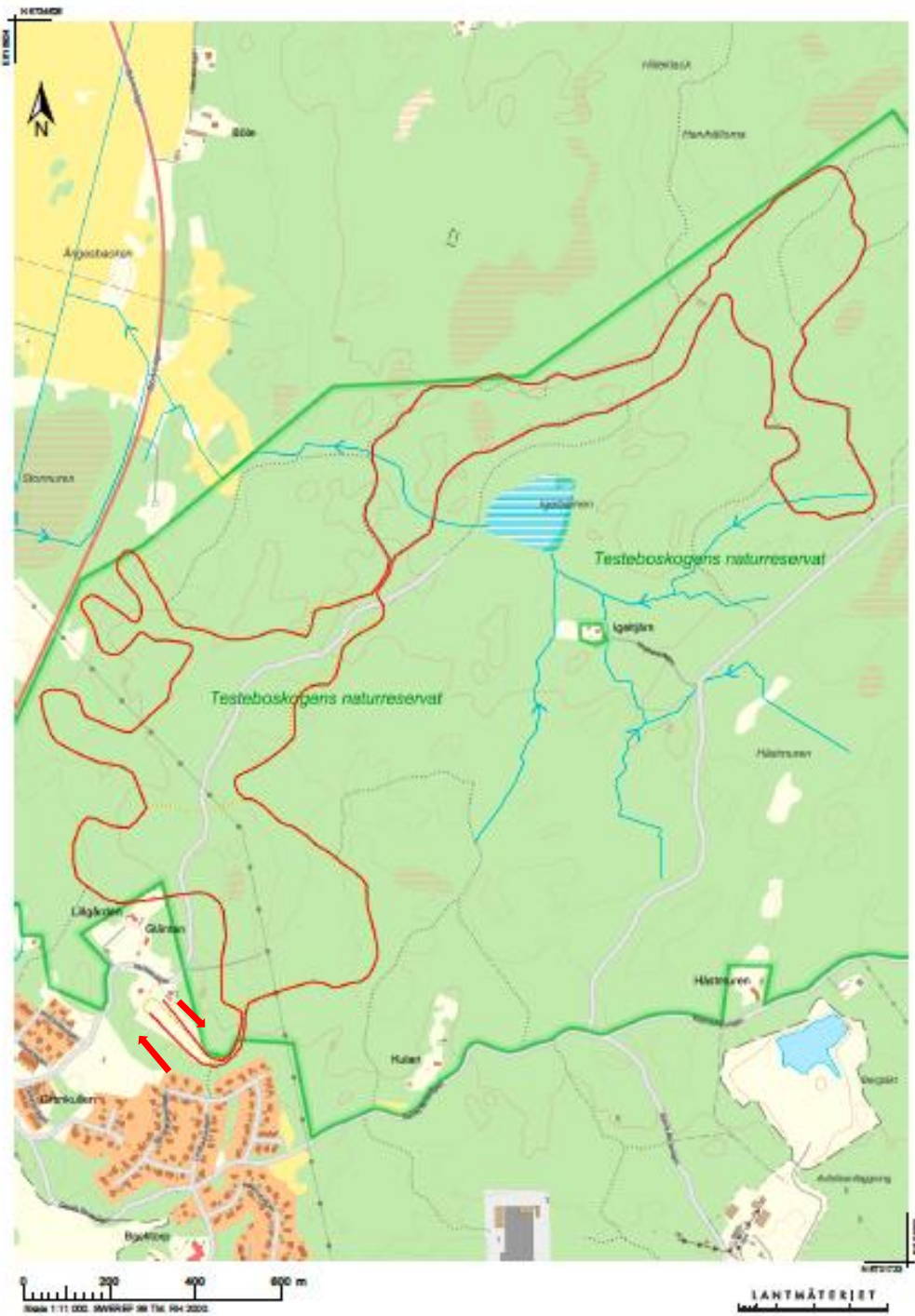
Sp2/Sp2J/MOTN1 (5,5 km)



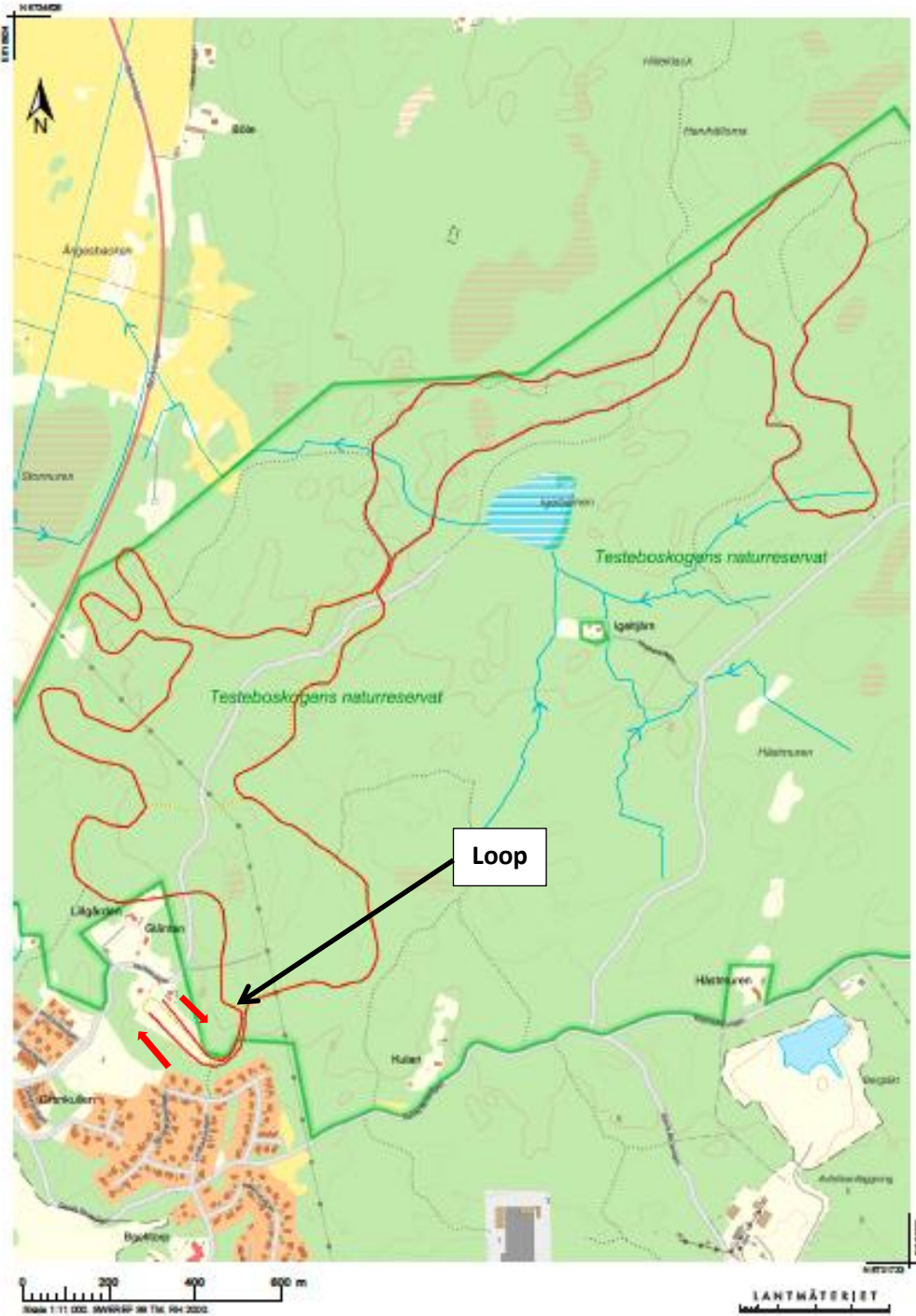
## Sp4/Sp4J/MOTN2 (8 km)



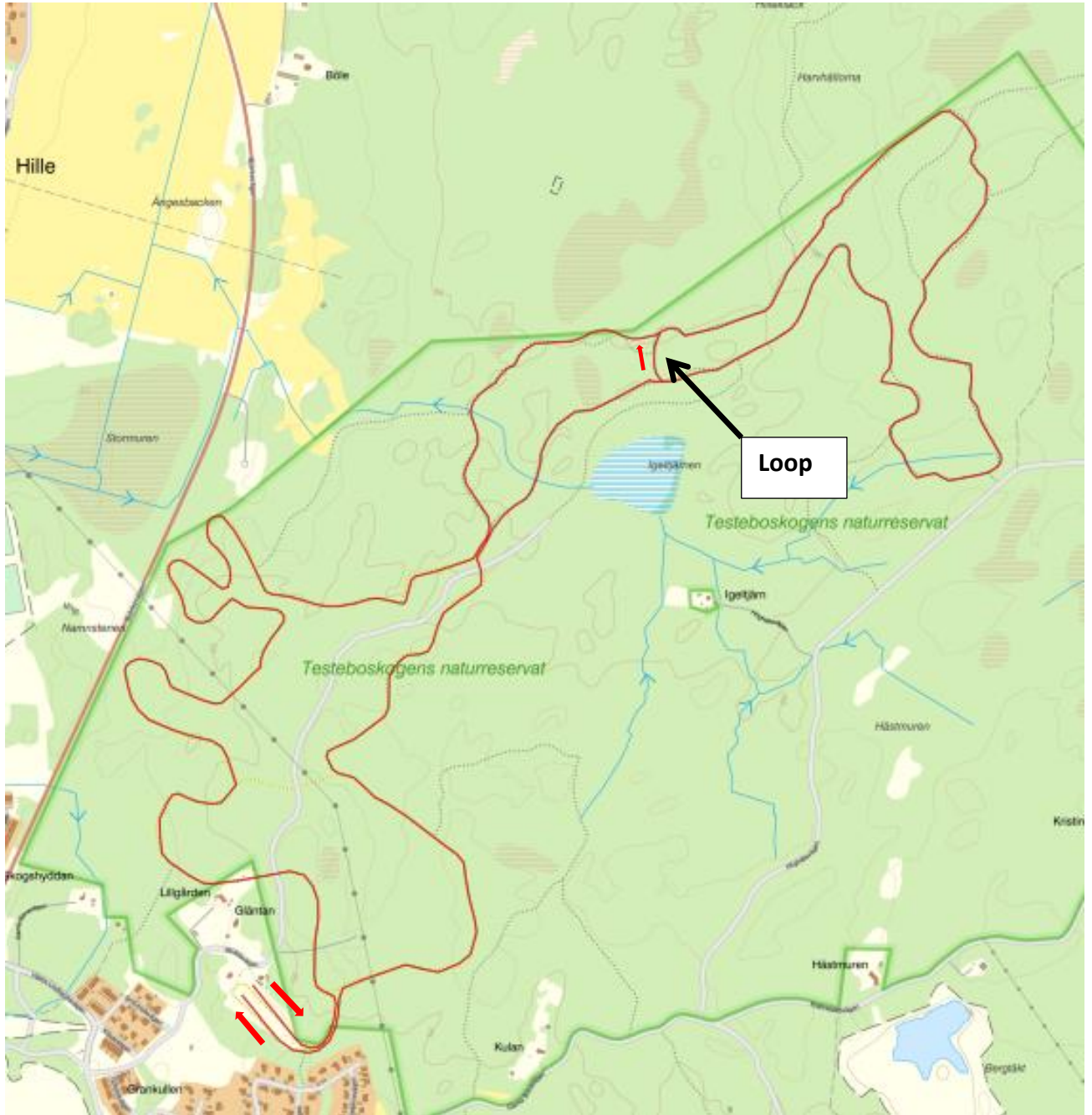
Sp6/SM2/SW2



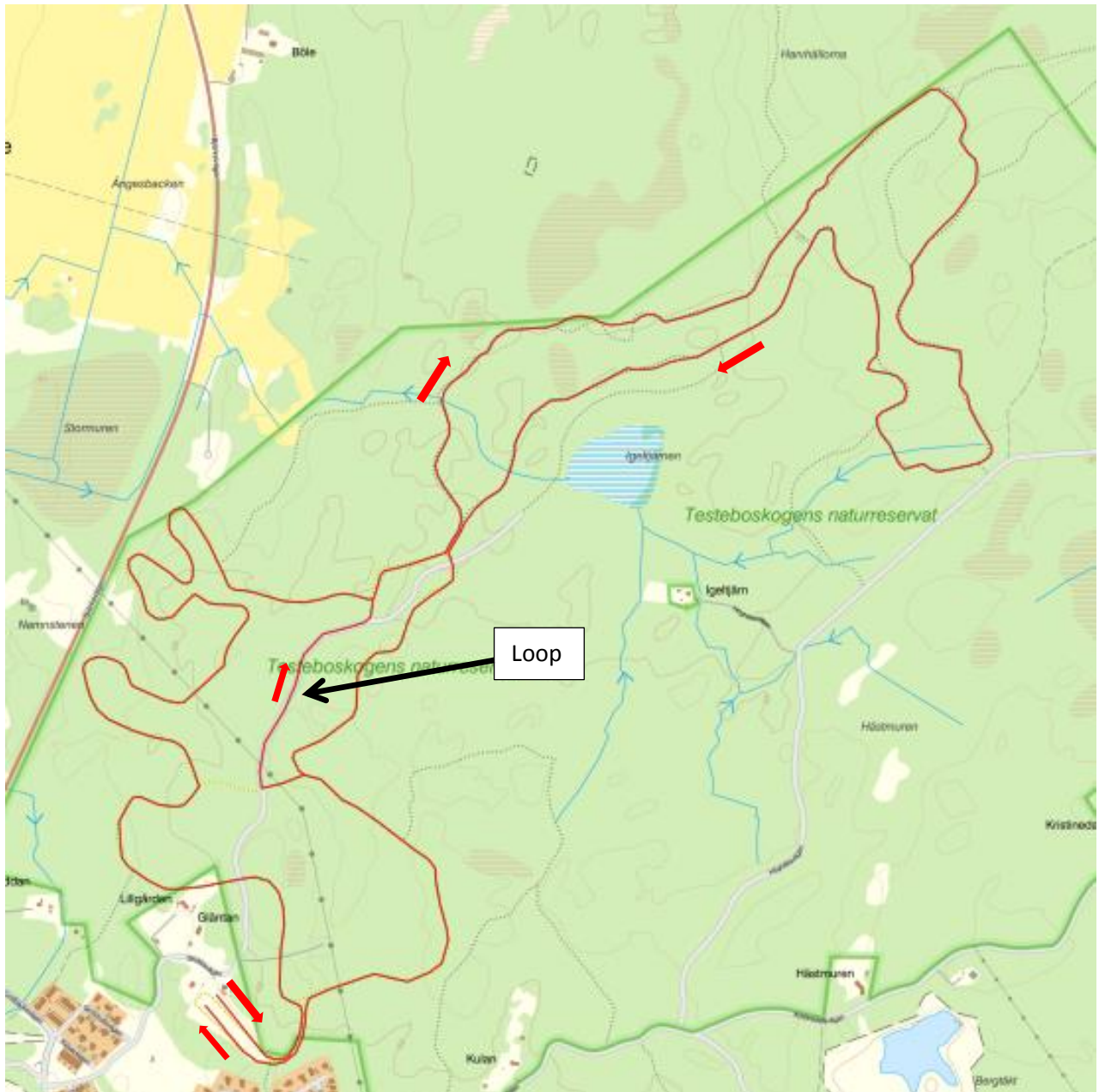
## SML2/SWL2



Sp8



## SpU



MD6/D6J/MD12

